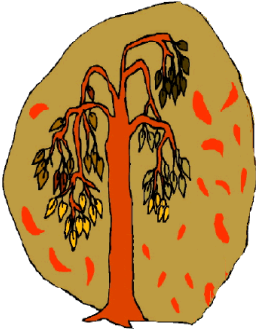


## How To Recognize if Chemical Agents Have Been Used



### Outdoors



- Dead plants
  - Some chemicals will kill plant life quickly, so if you see a lot of dead grass or flowers - stay away from the area. Chemical agents may have been used.

- Dead insects/no insects
  - Chemical agents may kill or drive off insects. You may see large numbers of dead insects on the ground - stay away from the area. Chemical agents may have been used.



- Dead or dying animals
  - Chemicals hurt animals. If groups of animals seem sick or are dying at the same time - stay away from the area. Chemical agents may have been used.

### Injuries and Deaths

- Chemicals could be used indoors and outdoors. Many people will become sick or die.
- If you see a lot of people sick or dying, stay away from the area. Chemical agents may have been used.



### Other

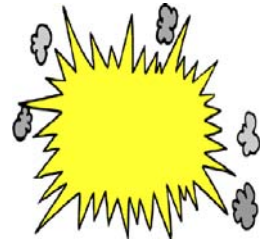
If it hasn't rained and there are puddles near sick people, plants or animals - stay away from the area. Chemical agents may have been used.

If there are strange dusts or powders near sick people, plants or animals - stay away from the area. Chemical agents may have been used.



If you see you see workers spraying wrong places or leaving their work equipment - stay away from the area. Chemical agents may have been used.

If you hear loud bangs or pops or see bombs explode then see liquid puddles or clouds - stay away from the area. Chemical agents may have been used.



**Remember:** Sometimes there may be more than one bomb. The other bombs may explode later.

**For more information, call your local or state health department**



Text by the North Dakota Department of Health. Adapted by Healthy Roads Media ([www.healthyroadsmedia.org](http://www.healthyroadsmedia.org)) with funding provided by Fargo Cass Public Health through the Cities Readiness Initiative (CRI).