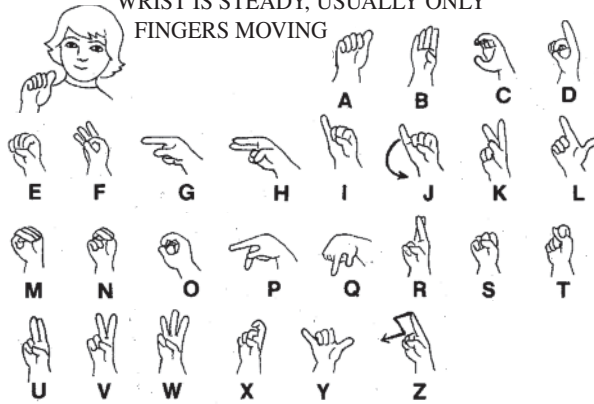


MANUAL ALPHABET

WHEN SPELLING, ARM IS IN NEAR CHEST,
WRIST IS STEADY, USUALLY ONLY
FINGERS MOVING



STATE OF CALIFORNIA
HEALTH AND HUMAN
SERVICES AGENCY
DEPARTMENT OF
SOCIAL SERVICES

PUB 179A (03/08)

COMMUNICATION SUGGESTIONS

It is hoped this card will alleviate some communication problems between law officials and deaf people. Deaf people 1) have not responded correctly to police because they could not be lipread, 2) have reached for paper/pencil and were assumed to be reaching for weapons, 3) have not heeded police warnings because they could not hear them.

Although the speech of deaf people sounds different from that of hearing people, there is no direct cause-effect relationship between deafness and inability to speak. The terms "deaf-mute" and "deaf and dumb" are incorrect and are considered insults by the deaf.

Messages need not include signs for all words in English sentences. For example, the words in parentheses may be understood by context, natural body movement, etc. "(Were any) people hurt? I need (some) paper (and a) pencil." Many sentences can be made from the signs on this card; e.g., "Please show me your registration card."

When asking questions, lean forward, use a questioning expression, and hold the last sign. Use natural gestures, e.g., headshakes for agreement and negation.

In the sign illustrations, dotted hands show starting positions.

Use the manual alphabet to fingerspell names and other key words for which you have no sign. Be sure to speak when signing; lipreading and use of residual hearing help. It is easier to sign than to understand signs, so be patient. Also, since speaking is easier than lipreading, deaf people can often speak understandably, but cannot understand others without signs or writing.

LOCAL INTERPRETERS AND SERVICES

SOUTHERN CALIFORNIA:

Cypress: (714) 826-9793 Voice/TTY
Los Angeles: (323) 478-8000 Voice
(323) 550-4226 TTY
Riverside: (951) 275-5000 Voice
(951) 275-0640 TTY
San Diego: (619) 398-2441 Voice
(619) 398-2440 TTY
Ventura: (805) 644-6322 Voice
(805) 644-6323 TTY

CENTRAL CALIFORNIA:

Fresno: (559) 225-3323 Voice
(559) 225-0415 TTY
Merced: (209) 726-7783 Voice
(209) 726-7786 TTY
Salinas: (831) 753-6540 Voice
(831) 753-6541 TTY

NORTHERN CALIFORNIA:

Sacramento: (916) 349-7500 Voice/TTY
Stockton: (209) 474-1573 Voice
(209) 474-3088 TTY

BAY AREA AND NORTHERN CALIFORNIA:

San Leandro: (510) 483-0753 Voice
(510) 483-6914 TTY



A MANUAL COMMUNICATION GUIDE FOR FIELD OFFICERS

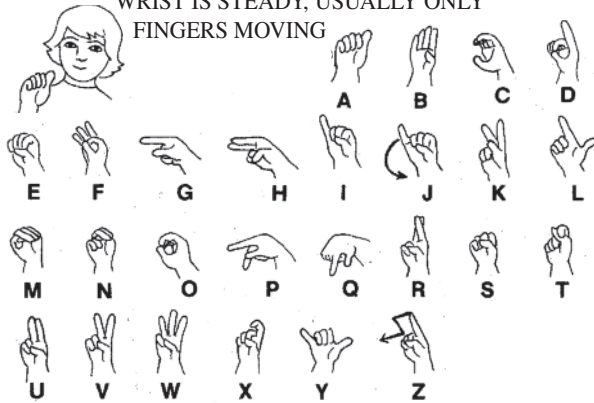
Originated by
Frank Caccamise/Carolyn Norris

California Department of Social Services
Office of Deaf Access

DEAF ACCESS PROGRAM
744 P Street, MS 11-91, Sacramento, CA 95814
(916) 653-8320 (Voice)
(916) 653-7651 (TTY)
www.dss.cahwnet.gov/cdssweb/PG145.htm

MANUAL ALPHABET

WHEN SPELLING, ARM IS IN NEAR CHEST,
WRIST IS STEADY, USUALLY ONLY
FINGERS MOVING



STATE OF CALIFORNIA
HEALTH AND HUMAN
SERVICES AGENCY
DEPARTMENT OF
SOCIAL SERVICES

PUB 179A (03/08)

COMMUNICATION SUGGESTIONS

It is hoped this card will alleviate some communication problems between law officials and deaf people. Deaf people 1) have not responded correctly to police because they could not be lipread, 2) have reached for paper/pencil and were assumed to be reaching for weapons, 3) have not heeded police warnings because they could not hear them.

Although the speech of deaf people sounds different from that of hearing people, there is no direct cause-effect relationship between deafness and inability to speak. The terms "deaf-mute" and "deaf and dumb" are incorrect and are considered insults by the deaf.

Messages need not include signs for all words in English sentences. For example, the words in parentheses may be understood by context, natural body movement, etc. "(Were any) people hurt? I need (some) paper (and a) pencil." Many sentences can be made from the signs on this card; e.g., "Please show me your registration card."

When asking questions, lean forward, use a questioning expression, and hold the last sign. Use natural gestures, e.g., headshakes for agreement and negation.

In the sign illustrations, dotted hands show starting positions.

Use the manual alphabet to fingerspell names and other key words for which you have no sign. Be sure to speak when signing; lipreading and use of residual hearing help. It is easier to sign than to understand signs, so be patient. Also, since speaking is easier than lipreading, deaf people can often speak understandably, but cannot understand others without signs or writing.

LOCAL INTERPRETERS AND SERVICES

SOUTHERN CALIFORNIA:

Cypress: (714) 826-9793 Voice/TTY
Los Angeles: (323) 478-8000 Voice
(323) 550-4226 TTY
Riverside: (951) 275-5000 Voice
(951) 275-0640 TTY
San Diego: (619) 398-2441 Voice
(619) 398-2440 TTY
Ventura: (805) 644-6322 Voice
(805) 644-6323 TTY

CENTRAL CALIFORNIA:

Fresno: (559) 225-3323 Voice
(559) 225-0415 TTY
Merced: (209) 726-7783 Voice
(209) 726-7786 TTY
Salinas: (831) 753-6540 Voice
(831) 753-6541 TTY

NORTHERN CALIFORNIA:

Sacramento: (916) 349-7500 Voice/TTY
Stockton: (209) 474-1573 Voice
(209) 474-3088 TTY

BAY AREA AND NORTHERN CALIFORNIA:

San Leandro: (510) 483-0753 Voice
(510) 483-6914 TTY



A MANUAL COMMUNICATION GUIDE FOR FIELD OFFICERS

Originated by
Frank Caccamise/Carolyn Norris

California Department of Social Services
Office of Deaf Access

DEAF ACCESS PROGRAM
744 P Street, MS 11-91, Sacramento, CA 95814
(916) 653-8320 (Voice)
(916) 653-7651 (TTY)
www.dss.cahwnet.gov/cdssweb/PG145.htm

ACCIDENT  A—hands collide	AMBULANCE A—thumb draws cross on sleeve HOSPITAL —Use H—hand 	ARREST 5—hands drop, closing sharply 	HURT Jerk I's close 	INSURANCE CARD Shake I, then outline card 	INTERPRETER Twist 9's, touching. Hands down sides of body 	NOT/DON'T A—thumb from chin forward 	PAPER Strike heels upward twice 	PENCIL "Moisten point," then write on palm 	UNDERSTAND Closed X to I at temple 	WHAT Index brushes down fingers 	WHEN Right index circles, then touches left index 	BROKE/BREAK Separate S's, twisting palms up 	CALL/PHONE Y—hand is phone 	CAR/DRIVE Drive with S's 
JAIL V—hands, right hits left 	JUDGE/COURT Alternately move 9's up and down (scales) 	LAW Lay L twice on hand 	PEOPLE alternately 	PLEASE Circle palm on chest 	POLICE (MAN) Outline badge 	WHERE 1 shakes sideways 	WHO 1 circles mouth 	WHY Drop to Y off brow 	LAWYER "Law" plus hands down sides of body 	LICENSE Tap L—thumbs twice 	LIGHT O springs open to 5 	QUESTION Index flicks question-mark, 1 to x to 1 	RED Index brushes down lips 	REGISTRATION R on fingers then on palm 
WRONG Y to chin 	YES Nod S (or Y) 	YOU/YOUR Point with I or palm (Point for other persons) 	Roll I's forward GO 	Shake G—hand GREEN Shake Y YELLOW 	Invert I—hands HAPPEN 	Point at self ME / I 	Palm on chest MY 	Tap side of H on side of H NAME 	Index on palm; both move forward SHOW 	Snap out thumb forward SPEEDING/FAST 	Side of hand hits palm STOP 	Fingertips on chest HAVE 	Right Palm lifts left S HELP 	Roll hands forward HOW 
Nod X twice NEED 	Close 2 fingers and thumb NO 	O's, touching, twist twice NUMBER 	Palm swings out from chin THANK YOU/ YOU'RE WELCOME 	Slide hand between fingers THROUGH 	Bent-V slides onto side of palm, (punch) TICKET 	Roll I's forward GO 	Shake G—hand GREEN Shake Y YELLOW 	Invert I—hands HAPPEN 						

ACCIDENT  A—hands collide	AMBULANCE A—thumb draws cross on sleeve HOSPITAL —Use H—hand 	ARREST 5—hands drop, closing sharply 	HURT Jerk I's close 	INSURANCE CARD Shake I, then outline card 	INTERPRETER Twist 9's, touching. Hands down sides of body 	NOT/DON'T A—thumb from chin forward 	PAPER Strike heels upward twice 	PENCIL "Moisten point," then write on palm 	UNDERSTAND Closed X to I at temple 	WHAT Index brushes down fingers 	WHEN Right index circles, then touches left index 	BROKE/BREAK Separate S's, twisting palms up 	CALL/PHONE Y—hand is phone 	CAR/DRIVE Drive with S's 
JAIL V—hands, right hits left 	JUDGE/COURT Alternately move 9's up and down (scales) 	LAW Lay L twice on hand 	PEOPLE alternately 	PLEASE Circle palm on chest 	POLICE (MAN) Outline badge 	WHERE 1 shakes sideways 	WHO 1 circles mouth 	WHY Drop to Y off brow 	LAWYER "Law" plus hands down sides of body 	LICENSE Tap L—thumbs twice 	LIGHT O springs open to 5 	QUESTION Index flicks question-mark, 1 to x to 1 	RED Index brushes down lips 	REGISTRATION R on fingers then on palm 
WRONG Y to chin 	YES Nod S (or Y) 	YOU/YOUR Point with I or palm (Point for other persons) 	Roll I's forward GO 	Shake G—hand GREEN Shake Y YELLOW 	Invert I—hands HAPPEN 	Point at self ME / I 	Palm on chest MY 	Tap side of H on side of H NAME 	Index on palm; both move forward SHOW 	Snap out thumb forward SPEEDING/FAST 	Side of hand hits palm STOP 	Fingertips on chest HAVE 	Right Palm lifts left S HELP 	Roll hands forward HOW 
Nod X twice NEED 	Close 2 fingers and thumb NO 	O's, touching, twist twice NUMBER 	Palm swings out from chin THANK YOU/ YOU'RE WELCOME 	Slide hand between fingers THROUGH 	Bent-V slides onto side of palm, (punch) TICKET 	Roll I's forward GO 	Shake G—hand GREEN Shake Y YELLOW 	Invert I—hands HAPPEN 						